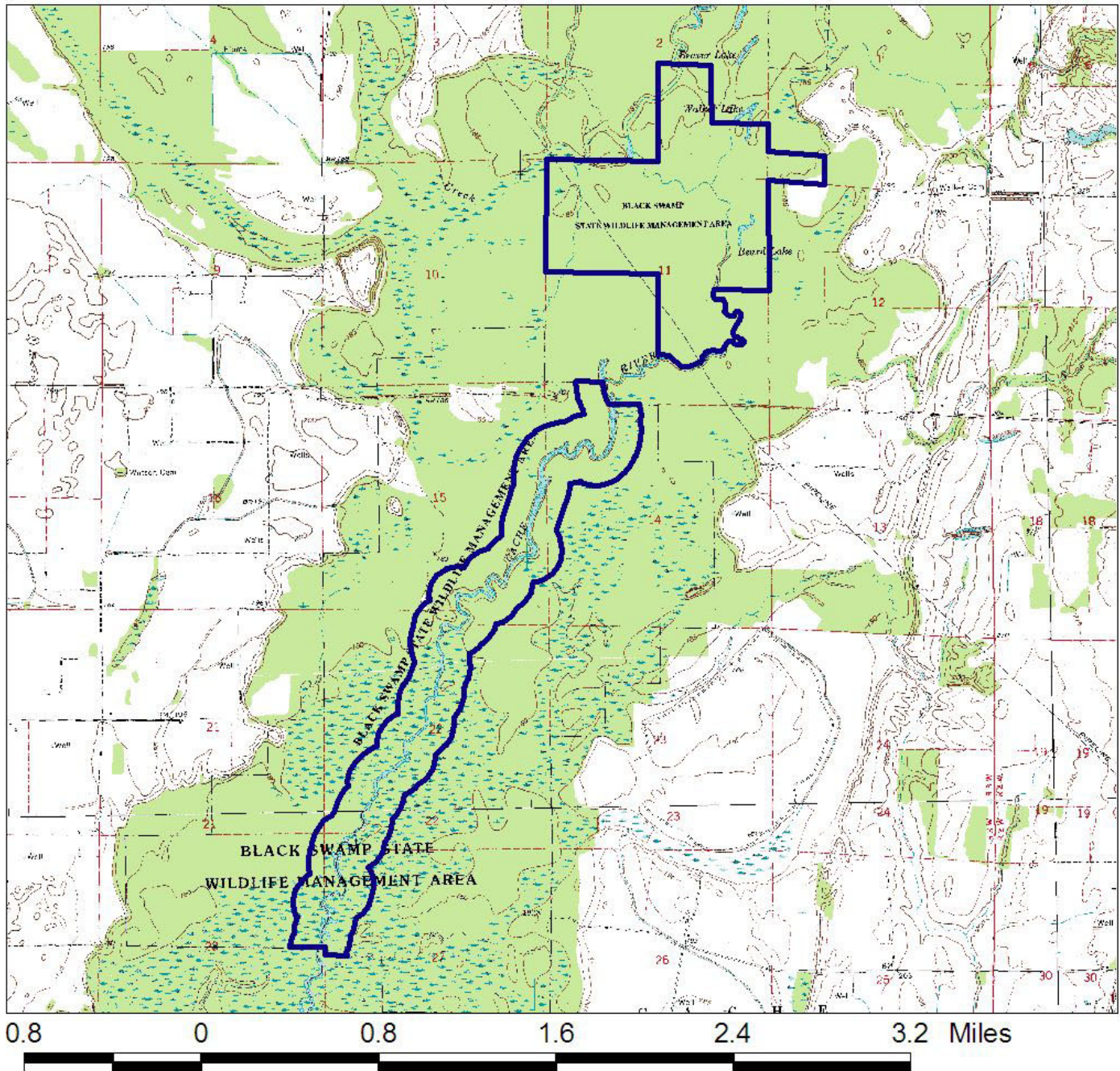


9/13/2006

Arkansas Natural Heritage Commission
Department of Arkansas Heritage
System of Natural Areas
Approximate Natural Area Boundaries



Cache River Natural Area

County: Woodruff Date Added To System: 1983 Acreage: 937.43

USGS Topographic Quadrangle: Gregory 7.5', Cotton Plant 7.5'
Township/Range: T06N/R23W Section(s) 1, 2, 11, 14, 15, 22, 27, 28 Contour Interval: 5 feet

Directions: From Augusta, travel south on State Highway 33 to Gregory (from Interstate 40 take exit 202 & travel north on State Highway 33). At Gregory turn east onto County Road 752 and travel 1.4 miles to the intersection with County Road 745. Bear right and continue on County Road 752 for 1.6 miles to the boat launch site.

