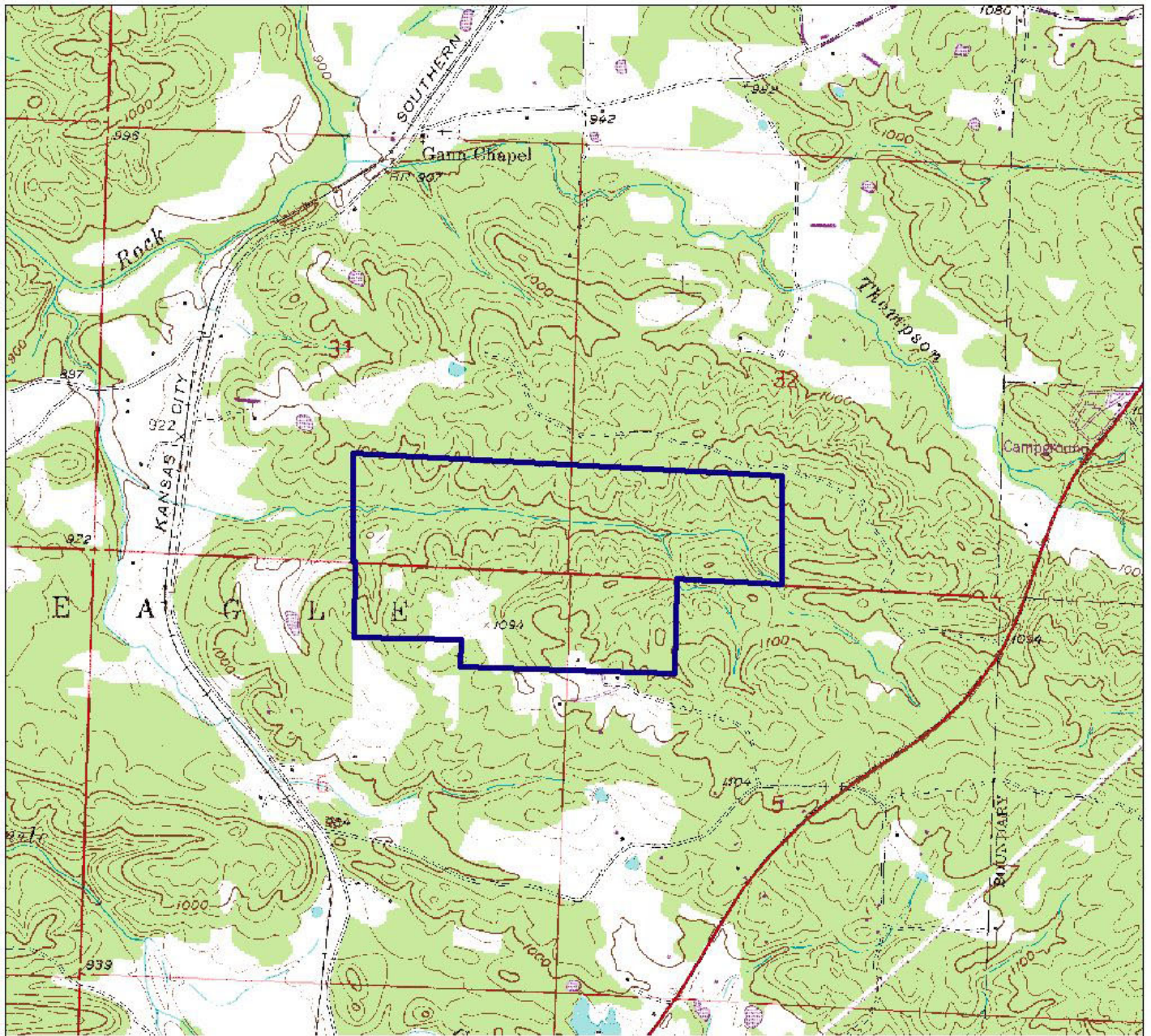


9/12/2006

Arkansas Natural Heritage Commission
Department of Arkansas Heritage
System of Natural Areas
Approximate Natural Area Boundaries



Iron Mountain Natural Area

County: Polk	Date Added To System: 1979	Acreage: 260.51
USGS Topographic Quadrangle: Potter 7.5		
Township/Range: T02S/R31W	Section(s): 31, 32	Contour Interval: 20 feet
T03S/R31W	5, 6	

Directions: From Mena, travel approximately 7.1 miles southwest on U.S. Highway 71 through and beyond Potter Junction. Turn right on County Road 168 and travel 0.2 mile to fork. Turn right on County Road 169 and travel 0.3 mile to parking area on your right.

