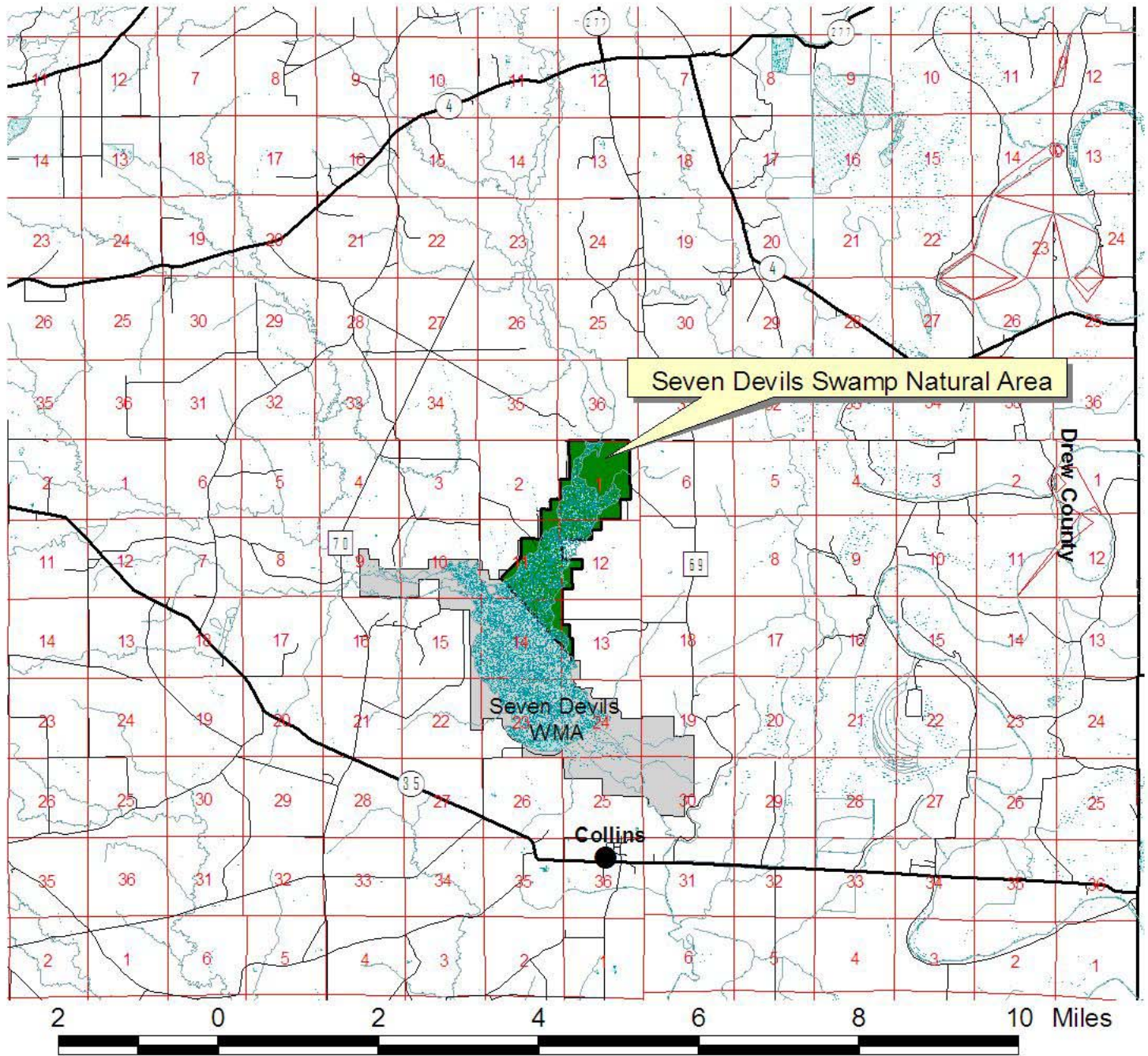


Arkansas Natural Heritage Commission  
Department of Arkansas Heritage  
Seven Devils Swamp Natural Area



**Seven Devils Swamp Natural Area**

County: Drew      Date Added To System: 2002      Acreage: 1,076.26

Directions: From Monticello, travel east on State Highway 35 approximately 14.0 miles to Collins. From Cut-off Creek bridge in Collins, continue east approximately 0.1 mile, and turn left on Selma-Collins Road (County Road 69). Travel north 3.65 miles. Turn Left on Barnard Road. Travel 1.5 miles to boat ramp.

