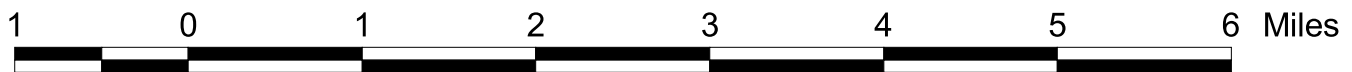
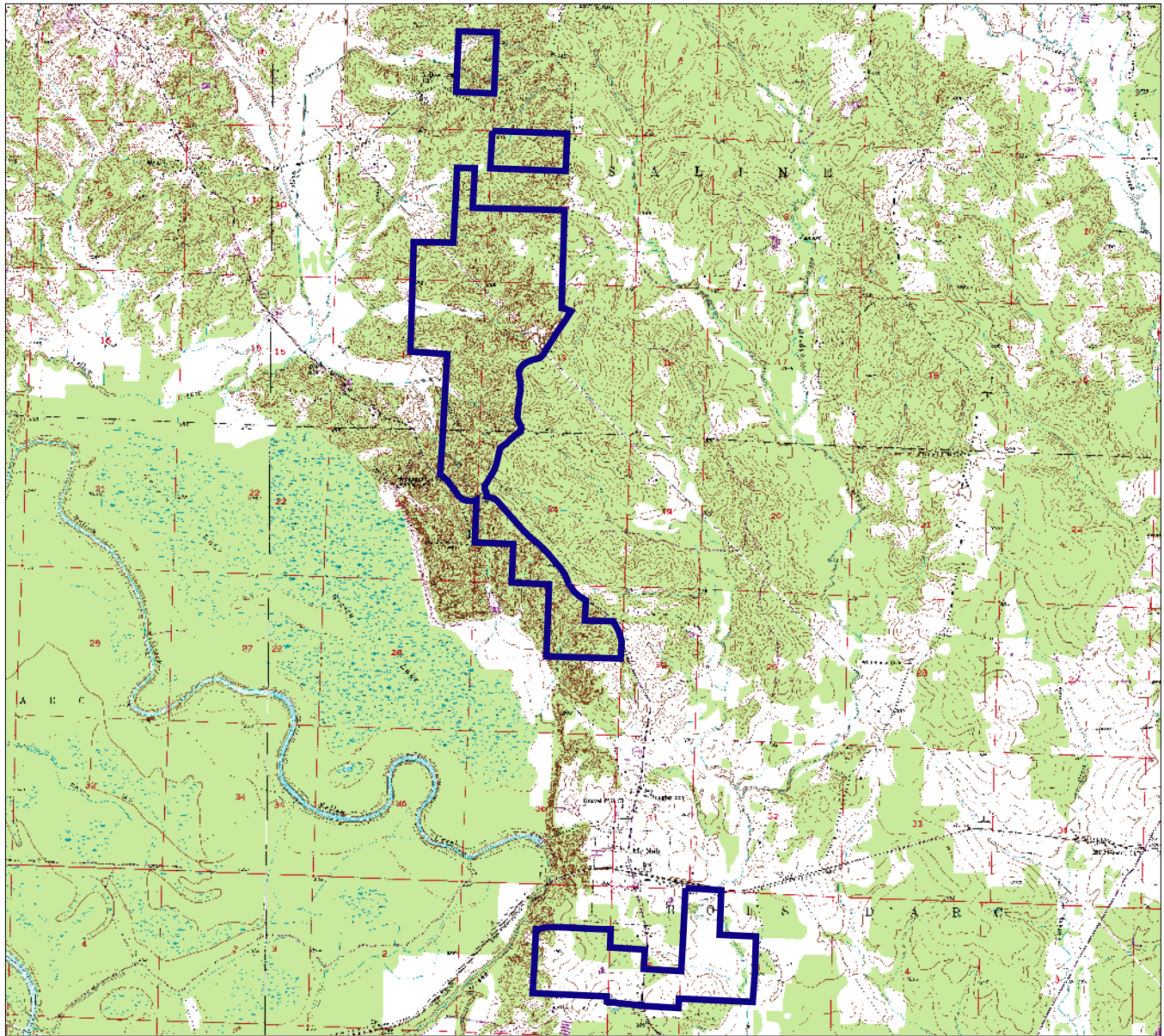


Arkansas Natural Heritage Commission
Department of Arkansas Heritage
System of Natural Areas
Approximate Natural Area Boundaries



Nacatoch Ravines Natural Area

County: Hempstead Date Added To System: 1989 Acreage: 1653.125

USGS Topographic Quadrangle: McNab 7.5'

Township/Range: T12S/R27W Section(s) 02, 11-14, 23-25 Contour Interval: 10 feet

T13S/R26W 05, 06

T13S/R27W 01

Directions: From Interstate 30 take exit 18 at Fulton, travel west on U.S. Highway 67 for 1 mile to State Highway 355. Turn right and travel north approximately 3 miles to southern tract. Continue north on State Highway 355 for approximately 2.5 miles to northern tract.

