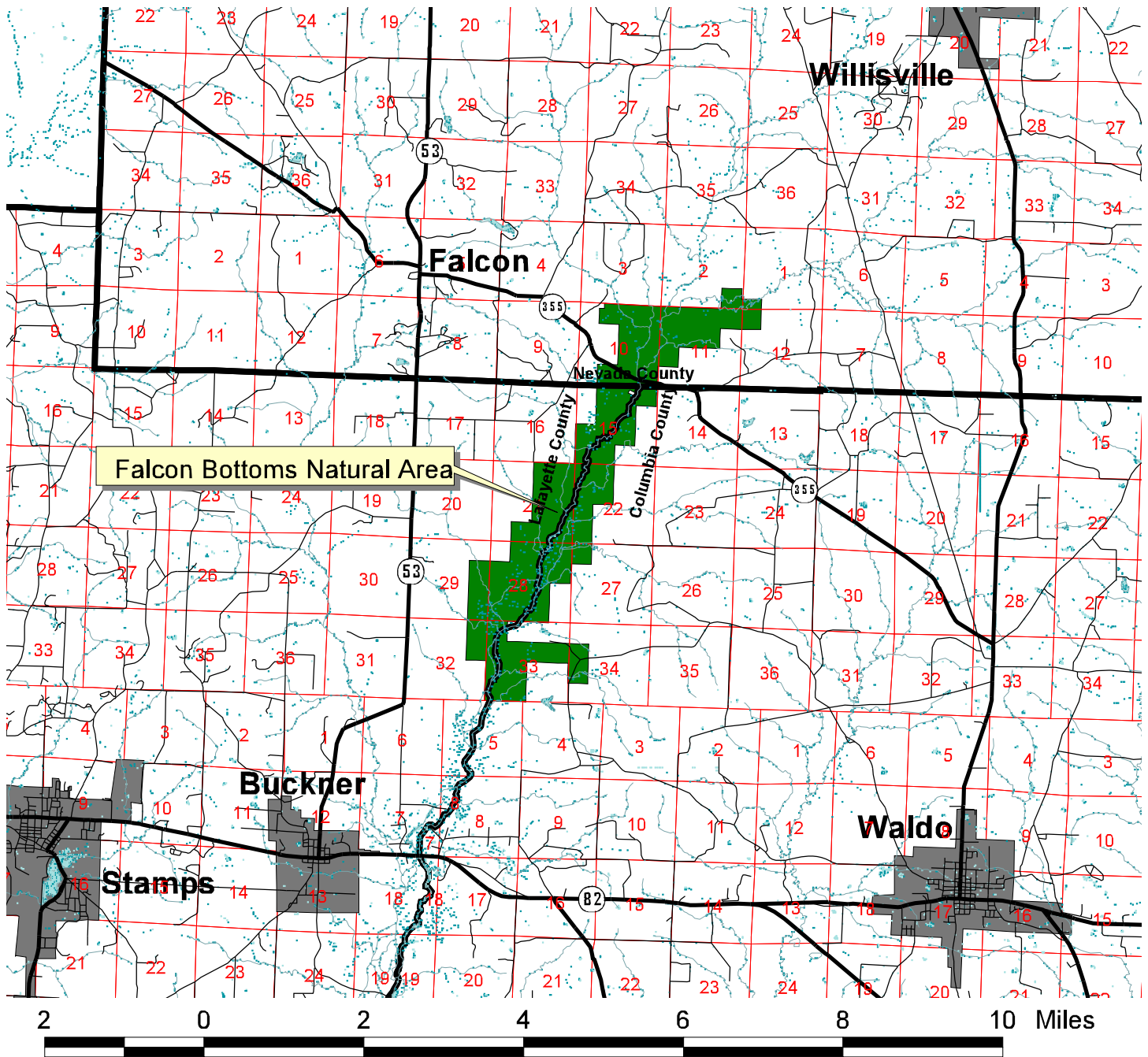


Arkansas Natural Heritage Commission  
Department of Arkansas Heritage  
Falcon Bottoms Natural Area



Falcon Bottoms Natural Area

Falcon Bottoms Natural Area

County: Columbia,  
Lafayette  
Nevada

Date Added To System: 1991

Acreage: 3,050.815

Directions: From Interstate 30 in Prescott, take U.S. Highway 371 south to State Highway 53. Take State Highway 53 south to Falcon. At Falcon turn east on State Highway 355 and travel approximately 3 miles to Dorcheat Bayou. The Natural Area lies to the north and south of the bridge crossing the Bayou.

