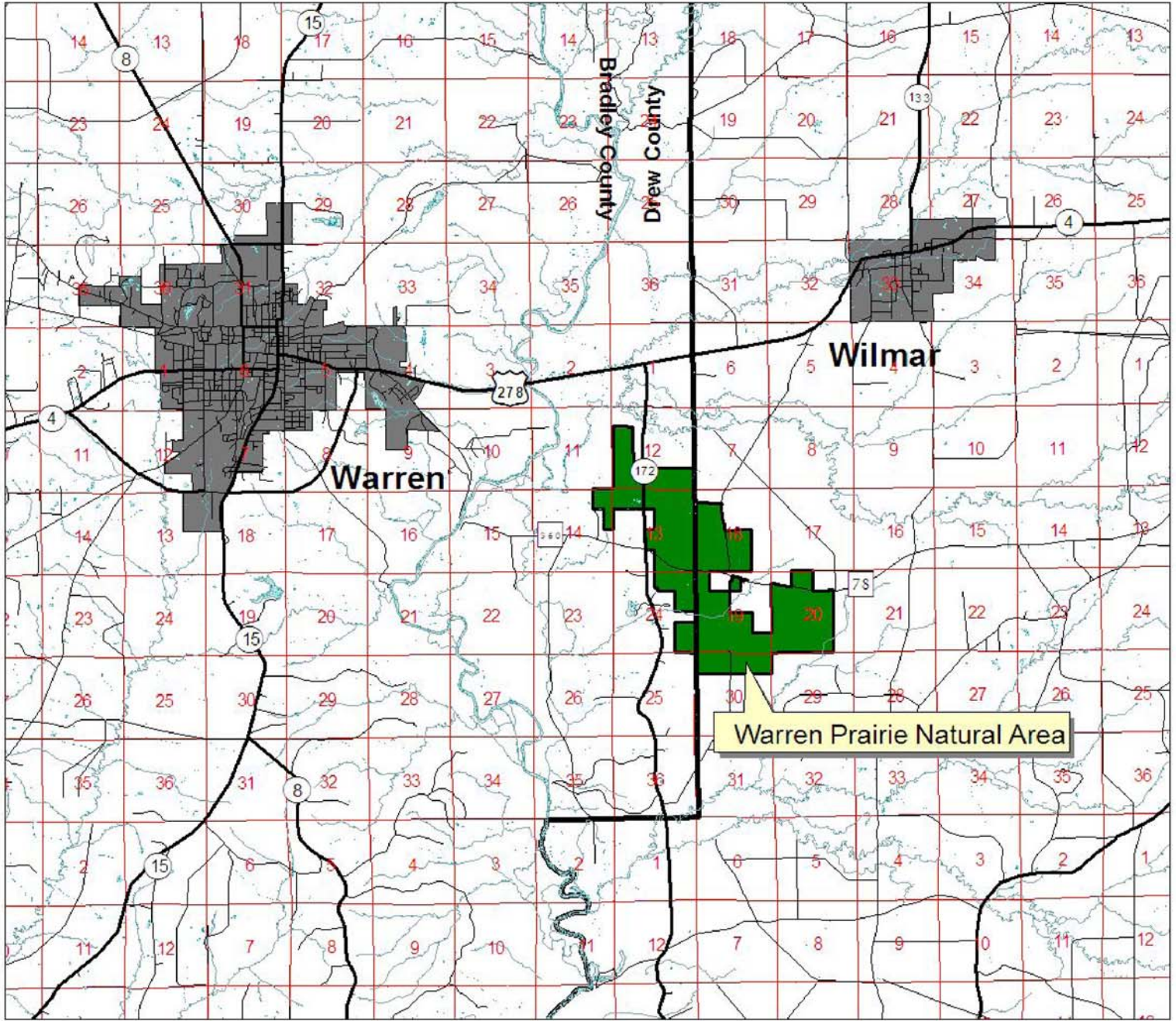


Arkansas Natural Heritage Commission
 Department of Arkansas Heritage
 Warren Prairie Natural Area



Warren Prairie Natural Area

County: Bradley, Drew Date Added To System: 1983 Acreage: 2,128.56

Directions: From Warren, take U.S. Highway 278 East approximately 4.5 miles, across the Saline River, to the junction of State Highway 172. Turn right (south) and proceed 2.0 miles to parking lot and sign on left (east).

