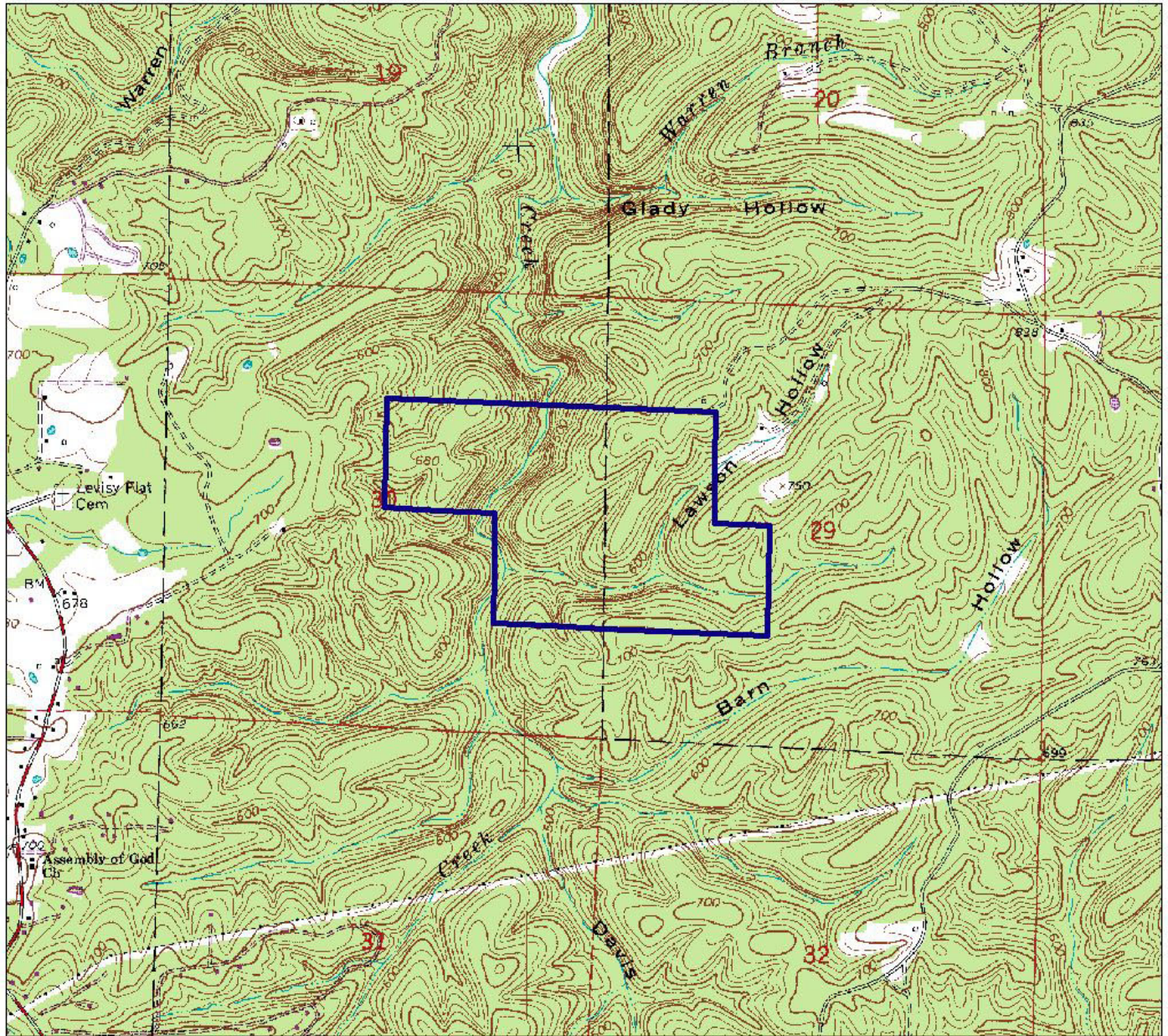


9/12/2006

Arkansas Natural Heritage Commission
Department of Arkansas Heritage
System of Natural Areas
Approximate Natural Area Boundaries



Hell Creek Natural Area

County: Stone Date Added To System: 1985 Acreage: 211.3782

USGS Topographic Quadrangle: Sylamore 7.5'
Township/Range: T15N/R10W Section(s): 30, 29 Contour Interval: 20 feet

Directions: From Mountain View (junction of State Highways 9 and 66) go east 0.6 mile on State Highway 9 to its junction with State Highway 14. Turn left (north) on State Highway 9 and go 1.3 miles to Herpel Road. Go about 4.9 miles (bearing left at 4.0 and 4.6 miles) and turn left. At Mountain View water tank, turn right and follow to Natural Area sign. Caution: public access may be restricted from time to time by a neighboring landowner's locked gate.

