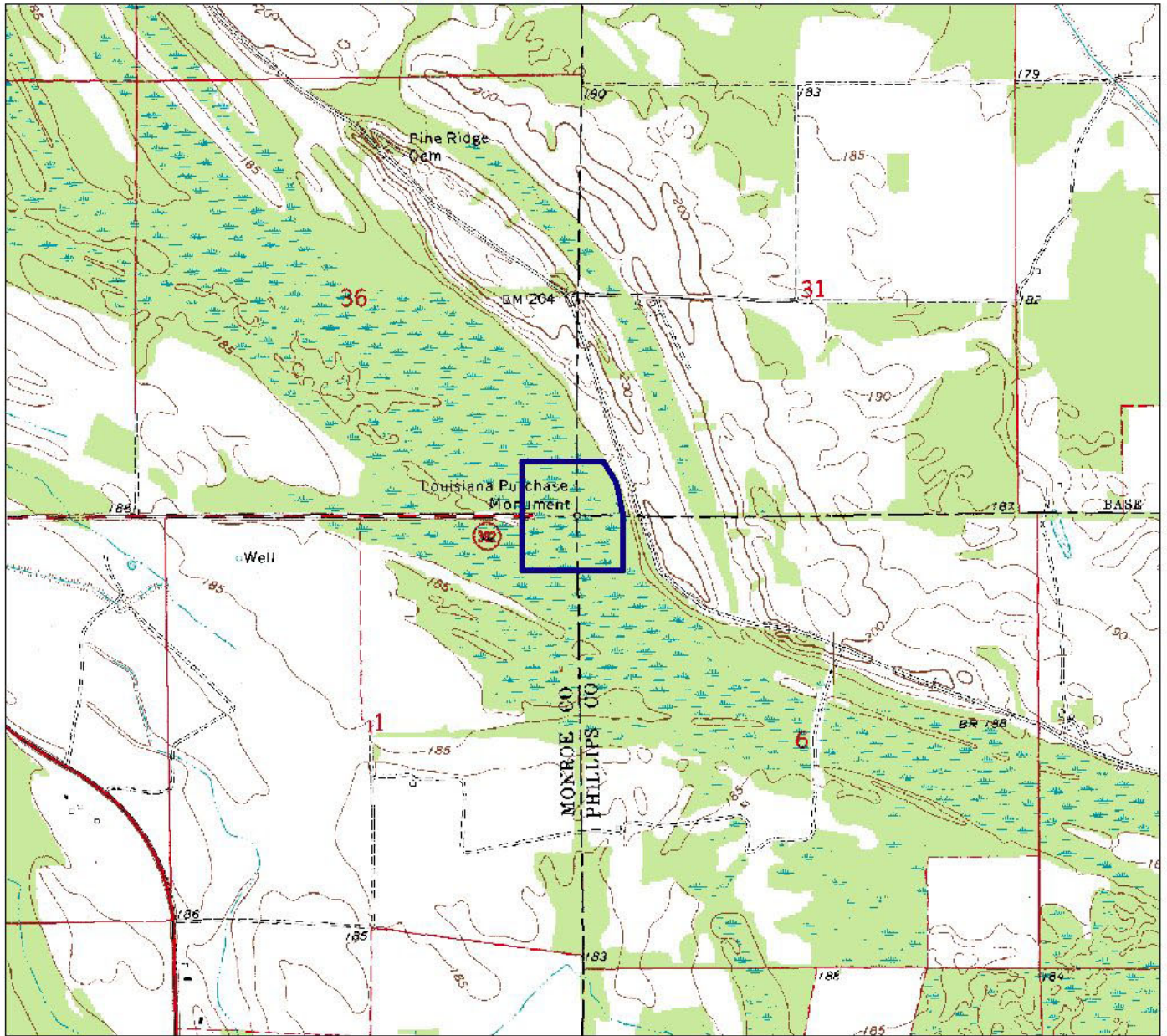


9/18/2006

Arkansas Natural Heritage Commission  
Department of Arkansas Heritage  
System of Natural Areas  
Approximate Natural Area Boundaries



0.5 0 0.5 1 1.5 2 Miles

Louisiana Purchase Natural Area

County: Monroe, Lee, Phillips Date Added To System: 1977 Acreage: 35.102

USGS Topographic Quadrangle: Monroe 7.5'  
Township/Range: T01N/R01W Section(s) 36, 31, 1, 6 Contour Interval: 5 feet  
T01N/R01E  
T01S/R01W  
T01S/R01E

Directions: From Interstate 40 at Brinkley, take U.S. Highway 49 and go 21 miles south to State Highway 362. Travel 2 miles east.

